

# "LES TERRASSES DU STILETTO" - Bâtiment C1- Entrée B

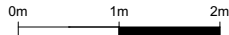
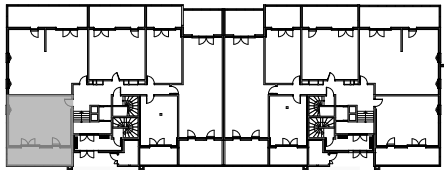
Chemin du Stiletto - AJACCIO

**Appartement: C1 - 01 b**  
RdC

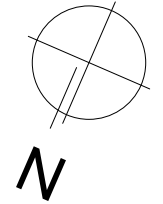
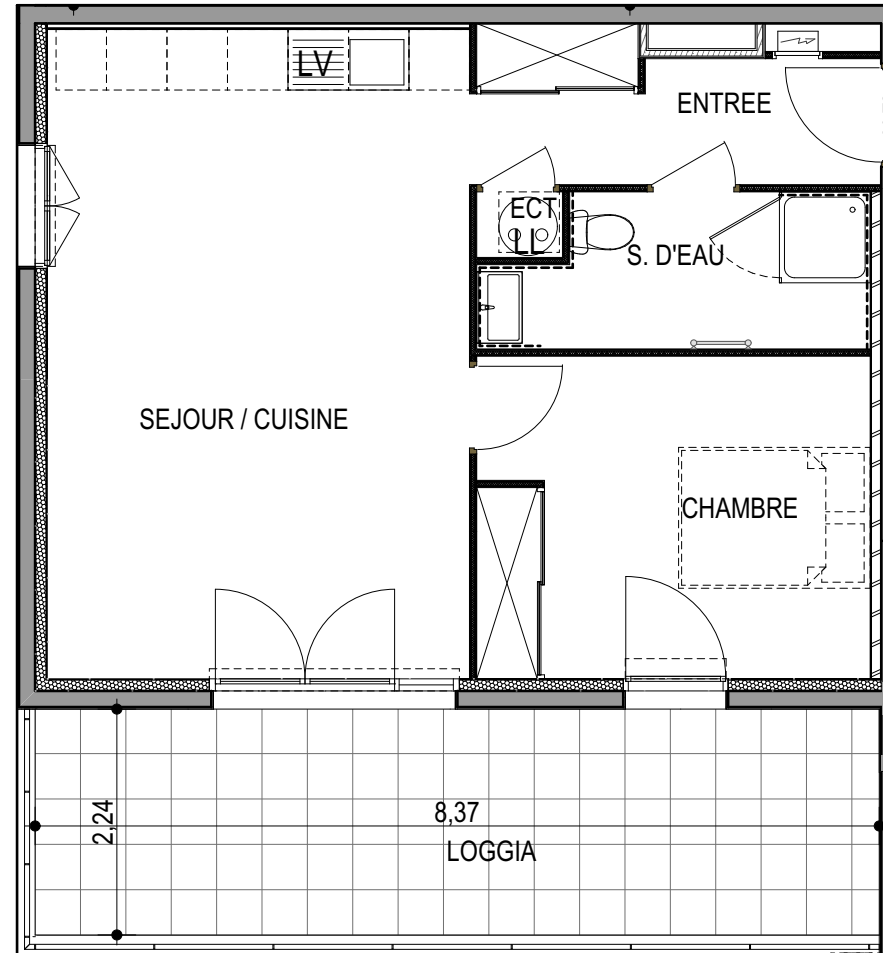
T2  
**Surfaces habitables**

Entrée	5.50 m <sup>2</sup>
Séjour - Cuisine	26.95 m <sup>2</sup>
Chambre	12.30 m <sup>2</sup>
Salle d'eau	5.40 m <sup>2</sup>
Placard ECT	0.55 m <sup>2</sup>
<b>TOTAL</b>	<b>50.70 m<sup>2</sup></b>

Loggia 18.75 m<sup>2</sup>



le 27 / 09 / 2021



**PLAN DE VENTE**