

"LES TERRASSES DU STILETTO" - Bâtiment C1- Entrée B

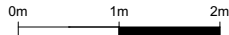
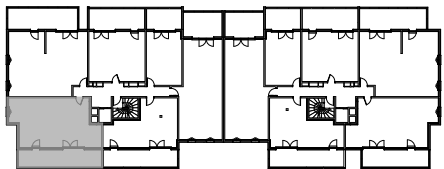
Chemin du Stiletto - AJACCIO

Appartement: C1 - 21 b
R+2

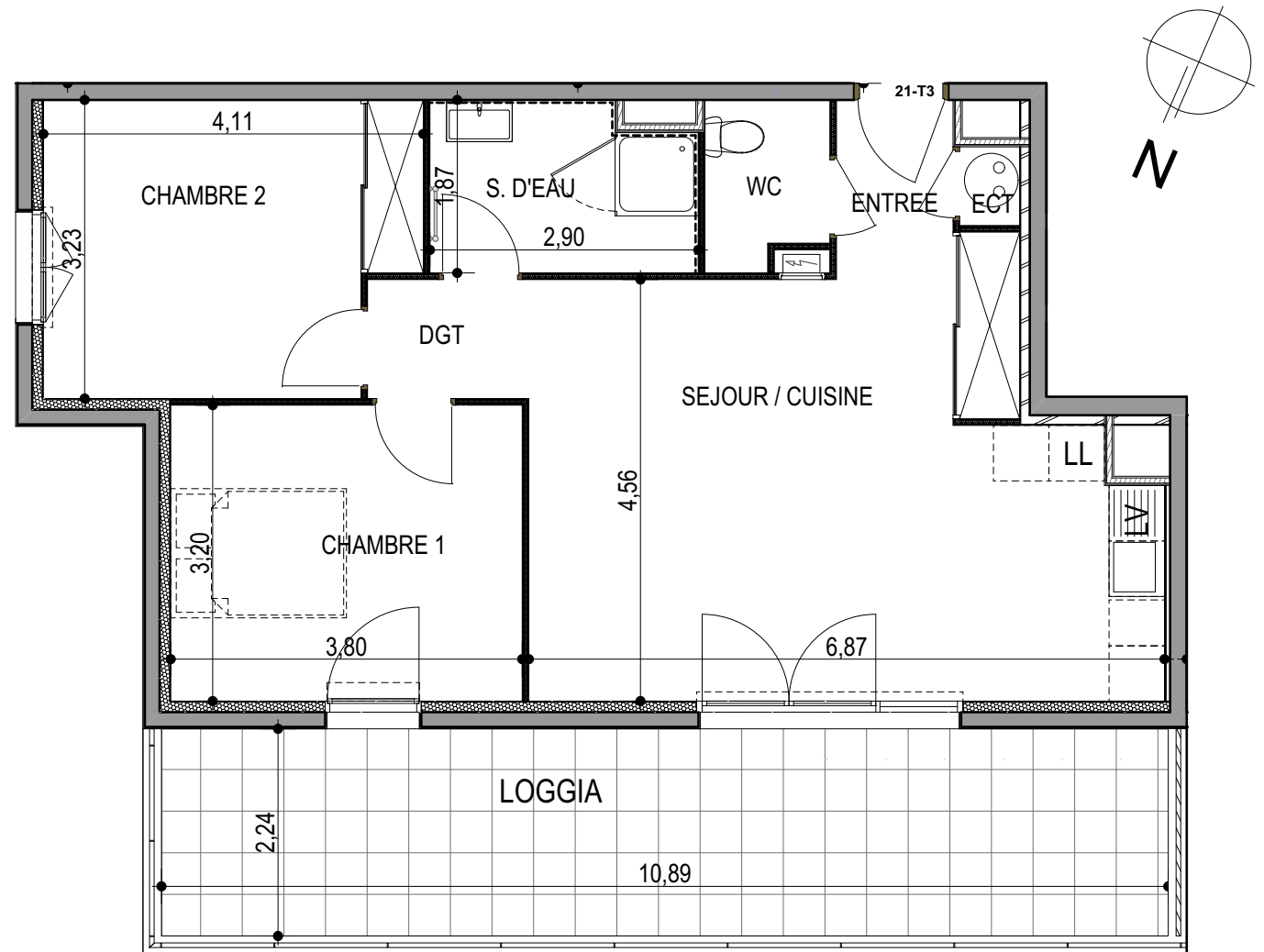
T3
Surfaces habitables

Entrée	2.45 m ²
Séjour - Cuisine	28.60 m ²
Chambre 1	11.95 m ²
Chambre 2	12.20 m ²
Salle d'eau	5.10 m ²
WC	2.50 m ²
Dégagement	2.25 m ²
Placard ECT	0.55 m ²
TOTAL	65.60 m²

Loggia 24.40 m²



le 27 / 09 / 2021



PLAN DE VENTE