

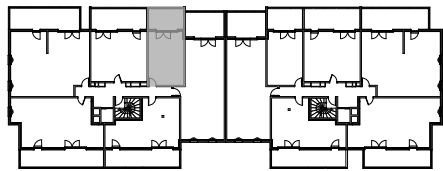
"LES TERRASSES DU STILETTO" - Bâtiment C1- Entrée B

Chemin du Stiletto - AJACCIO

Appartement: C1 - 24 b
R+2

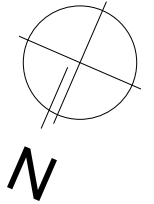
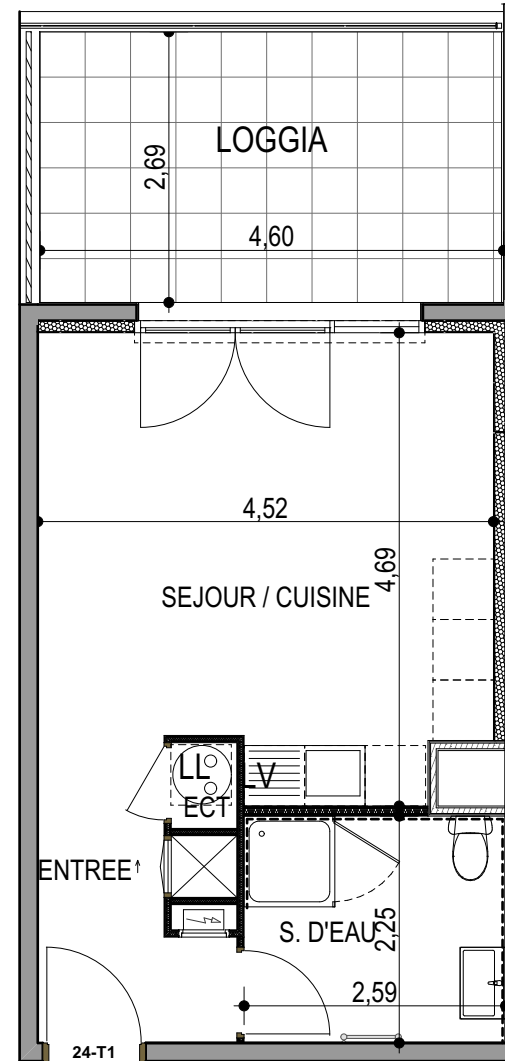
T1
Surfaces habitables

Entrée	5.00 m ²
Séjour - Cuisine	19.35 m ²
Salle d'eau - WC	5.85 m ²
Placard ECT	0.55 m ²
TOTAL	30.75 m²
Loggia	12.30 m ²



0m 1m 2m

le 27 / 09 / 2021



PLAN DE VENTE