

"LES TERRASSES DU STILETTO" - Bâtiment C1- Entrée A

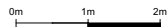
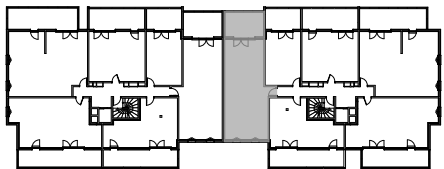
Chemin du Stiletto - AJACCIO

Appartement: C1 - 25 a
R+2

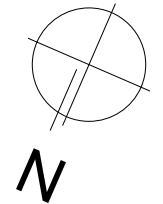
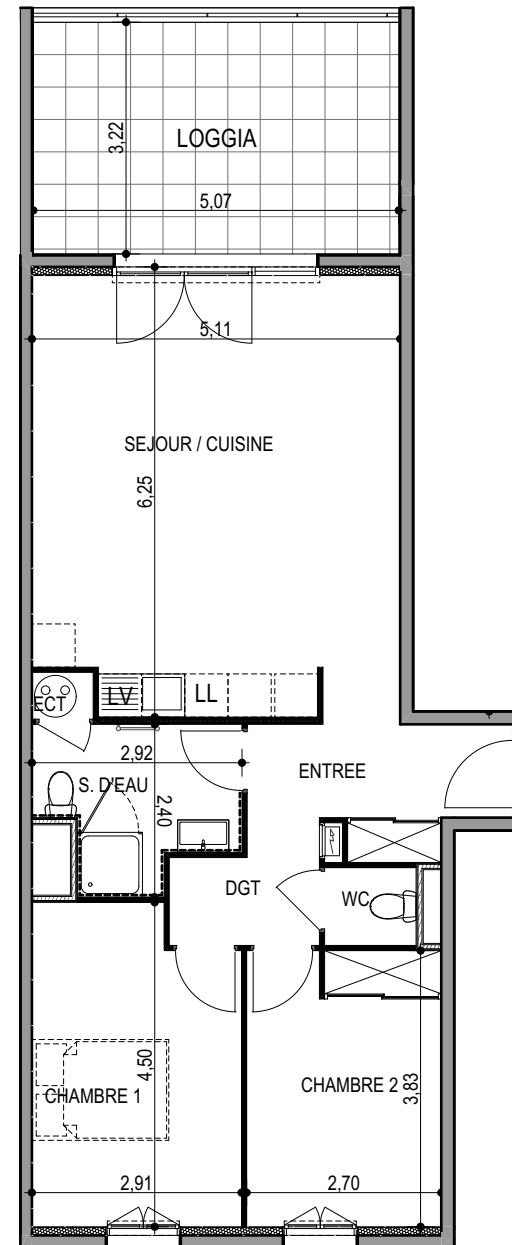
T3
Surfaces habitables

Entrée	5.50 m ²
Séjour - Cuisine	30.65 m ²
Chambre 1	12.25 m ²
Chambre 2	10.20 m ²
Salle d'eau	5.65 m ²
WC	1.35 m ²
Dégagement	3.10 m ²
Placard ECT	0.55 m ²
TOTAL	69.25 m²

Loggia 16.40 m²



le 27 / 09 / 2021



PLAN DE VENTE