

"LES TERRASSES DU STILETTO" - Bâtiment C1- Entrée A

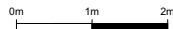
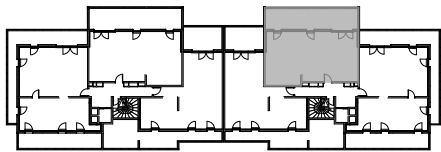
Chemin du Stiletto - AJACCIO

Appartement: C1 - 52 a
R+5

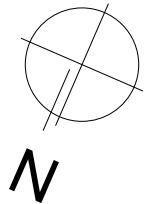
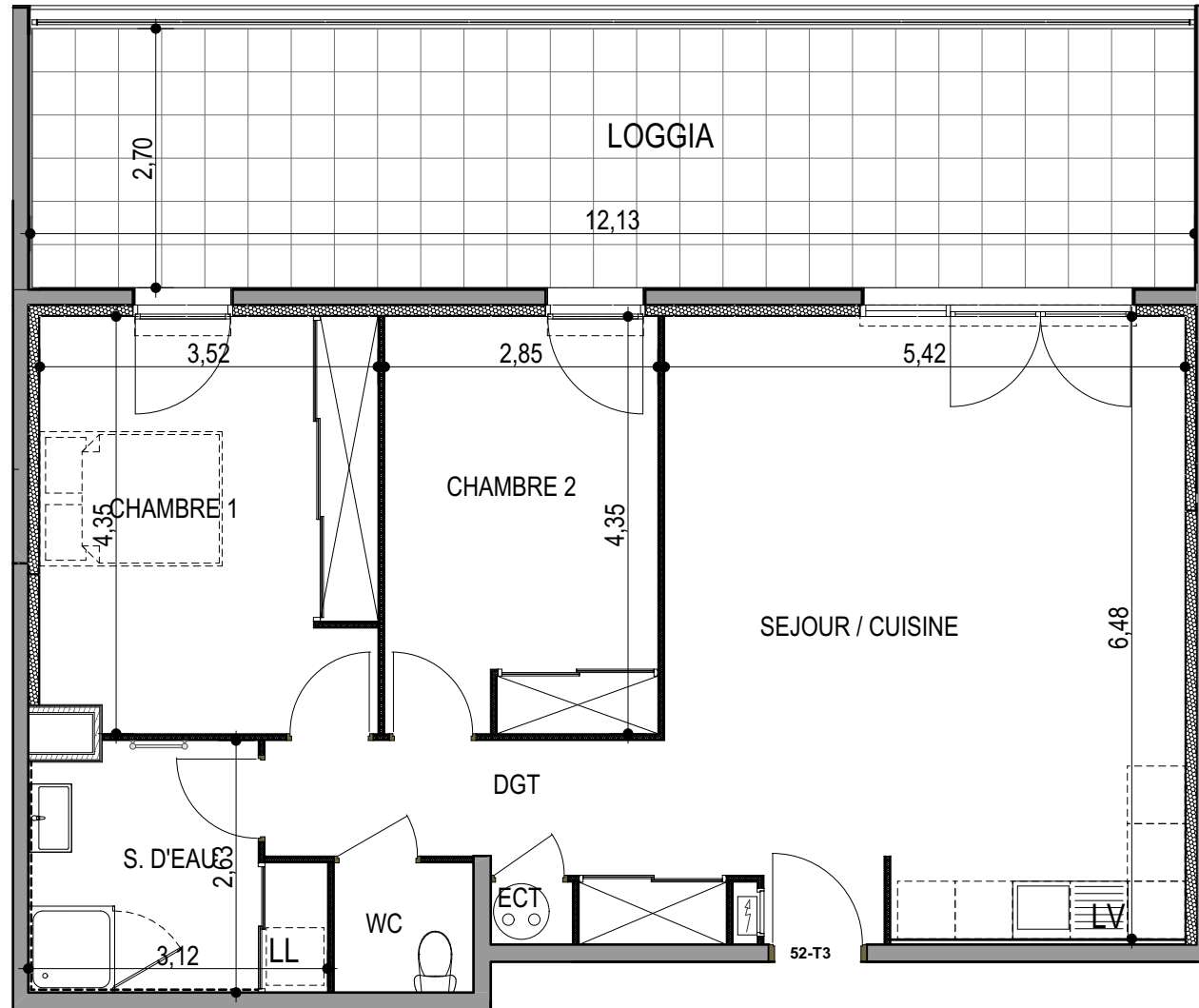
T3
Surfaces habitables

Séjour - Cuisine	34.50 m ²
Chambre 1	14.85 m ²
Chambre 2	12.20 m ²
Salle d'eau	7.00 m ²
WC	1.95 m ²
Dégagement	6.35 m ²
Placard ECT	0.55 m ²
TOTAL	77.40 m²

Loggia 32.70 m²



le 27 / 09 / 2021



PLAN DE VENTE