

# "LES TERRASSES DU STILETTO" - Bâtiment C1- Entrée B

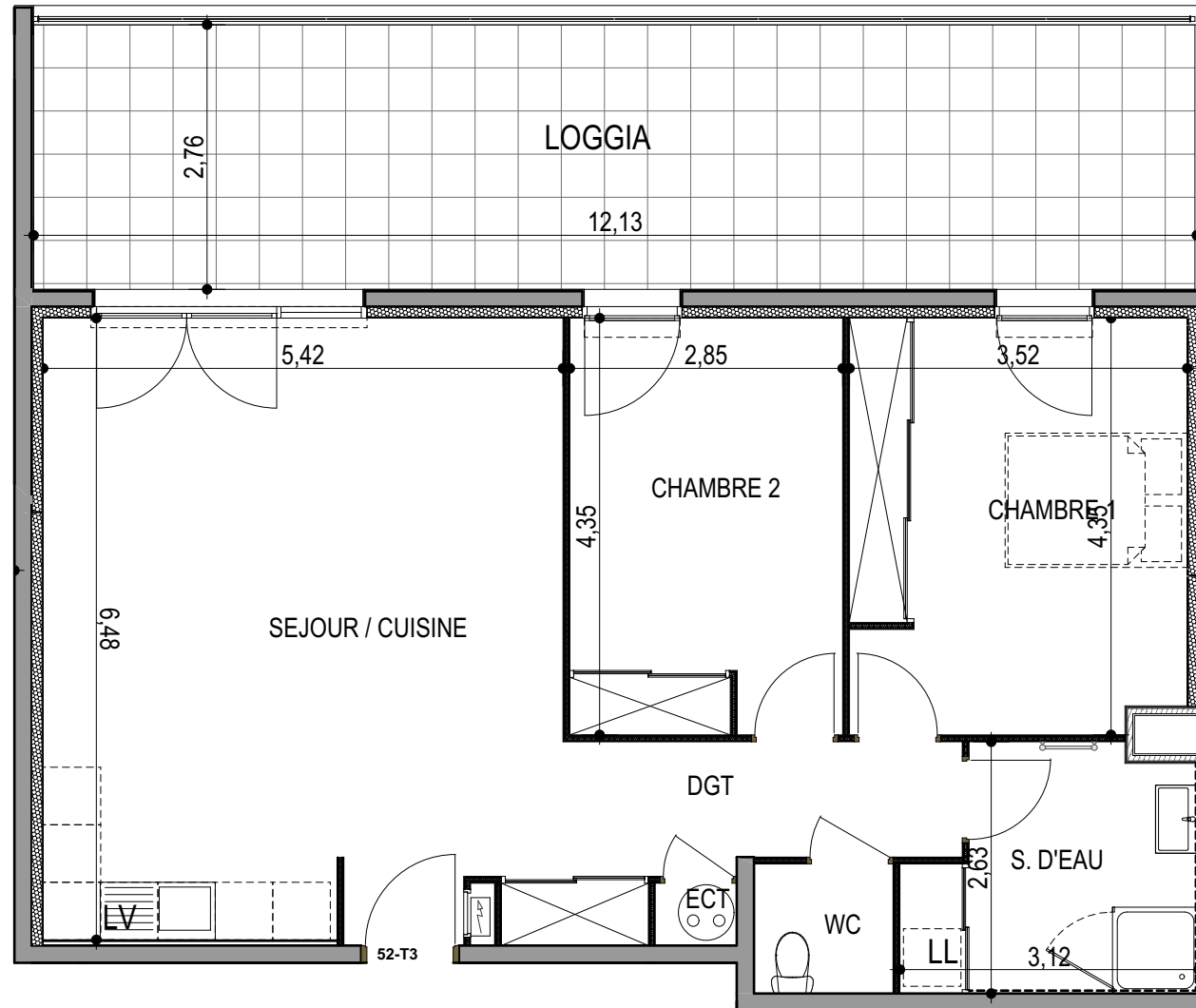
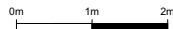
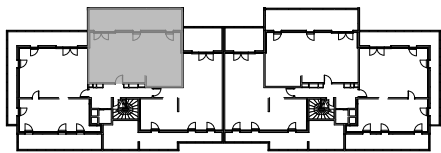
Chemin du Stiletto - AJACCIO

**Appartement: C1 - 52 b**  
R+5

T3  
**Surfaces habitables**

Séjour - Cuisine	34.50 m <sup>2</sup>
Chambre 1	14.85 m <sup>2</sup>
Chambre 2	12.20 m <sup>2</sup>
Salle d'eau	7.00 m <sup>2</sup>
WC	1.95 m <sup>2</sup>
Dégagement	6.35 m <sup>2</sup>
Placard ECT	0.55 m <sup>2</sup>
<b>TOTAL</b>	<b>77.40 m<sup>2</sup></b>

Loggia 33.45 m<sup>2</sup>



le 27 / 09 / 2021

**PLAN DE VENTE**