

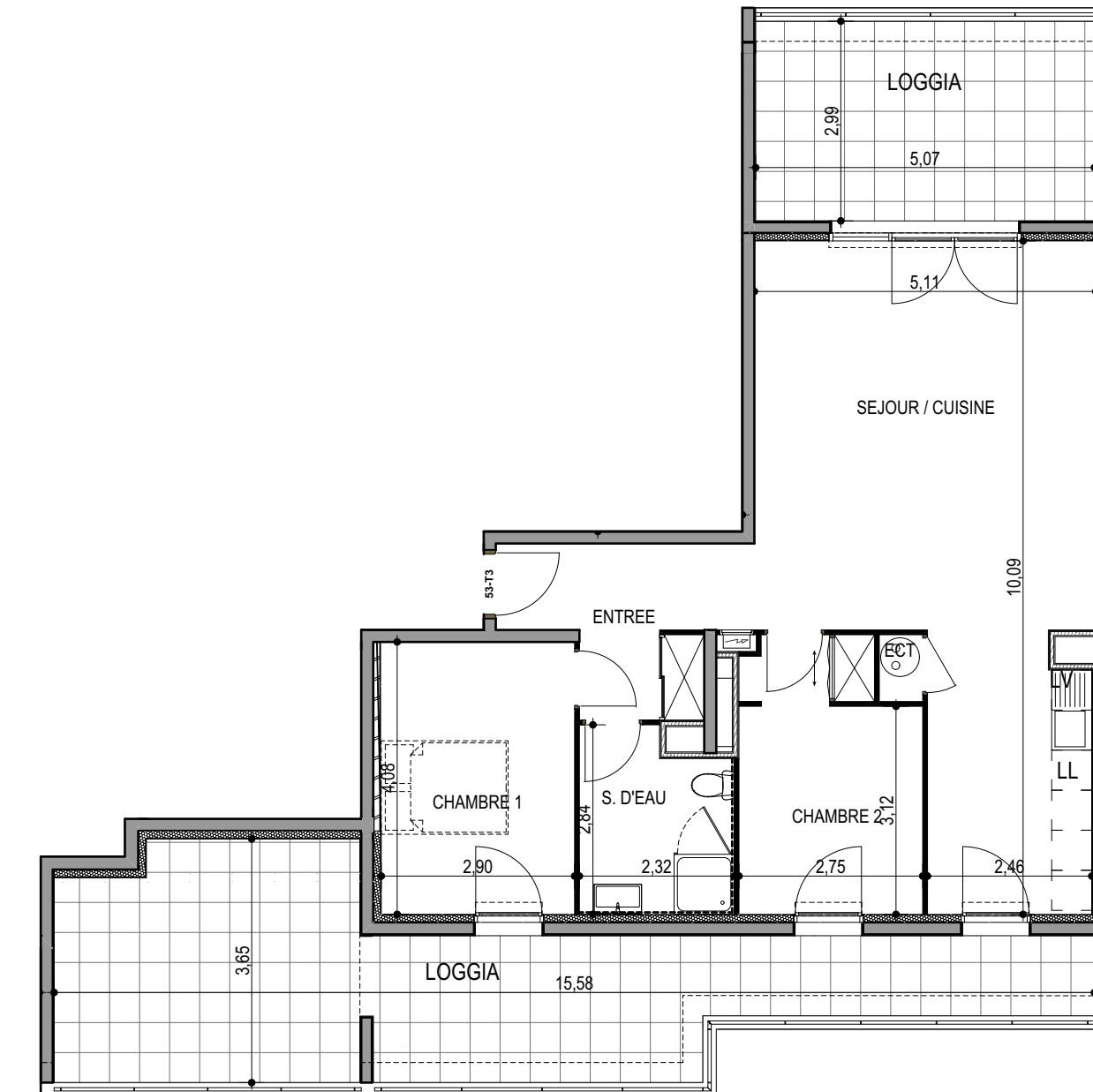
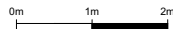
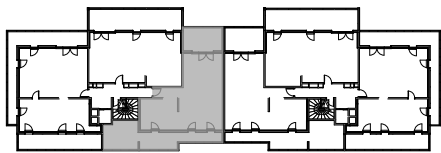
# "LES TERRASSES DU STILETTO" - Bâtiment C1- Entrée B

Chemin du Stiletto - AJACCIO

**Appartement: C1 - 53 b**  
R+5

T3  
**Surfaces habitables**

Entrée	7.40 m <sup>2</sup>
Séjour - Cuisine	39.90 m <sup>2</sup>
Chambre 1	11.70 m <sup>2</sup>
Chambre 2	10.50 m <sup>2</sup>
Salle d'eau	6.00 m <sup>2</sup>
Placard ECT	0.65 m <sup>2</sup>
<b>TOTAL</b>	<b>76.15 m<sup>2</sup></b>
Loggia	15.25 m <sup>2</sup>
Loggia	34.05 m <sup>2</sup>



le 27 / 09 / 2021

**PLAN DE VENTE**