

# "LES TERRASSES DU STILETTO" - Bâtiment D2 Entrée A

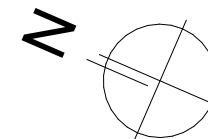
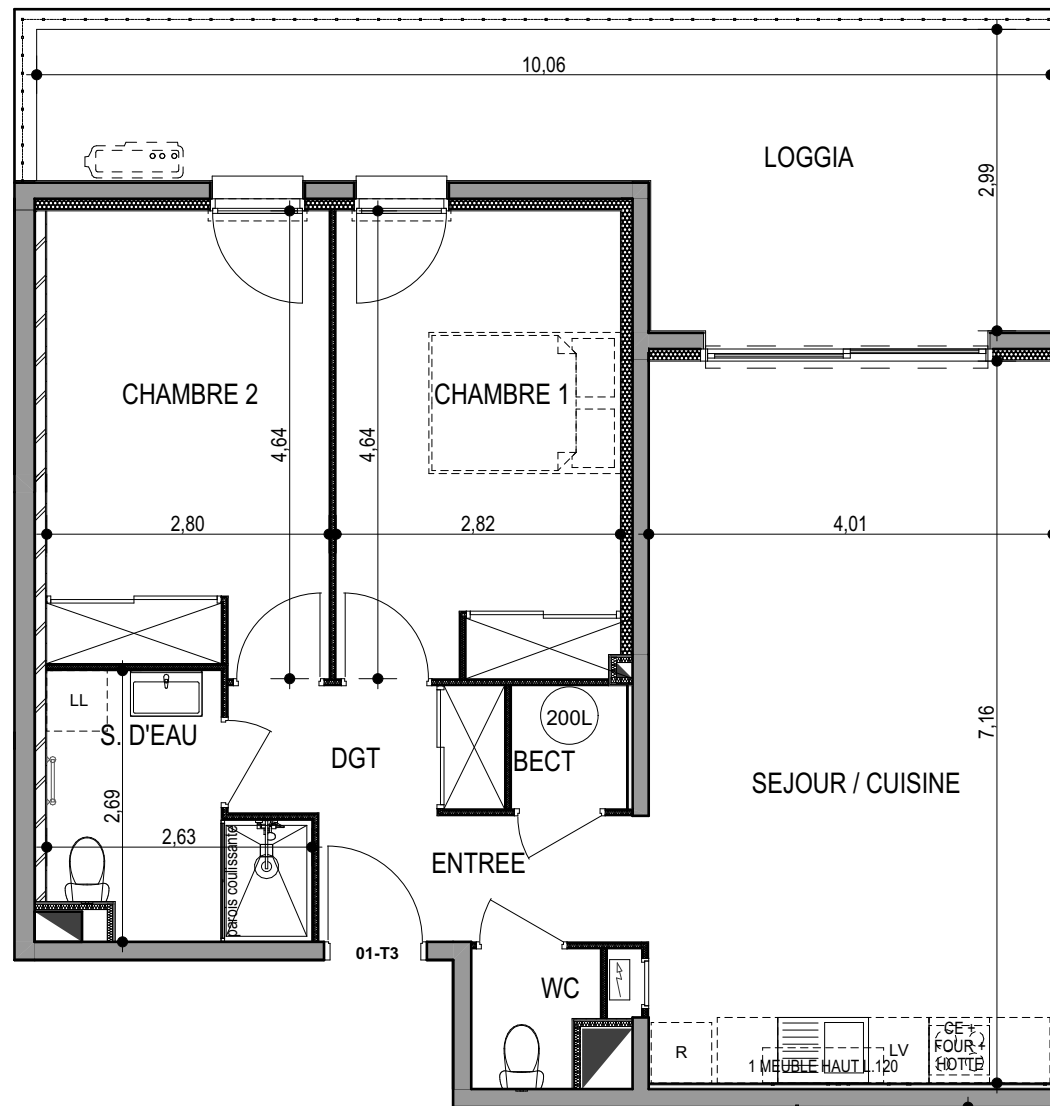
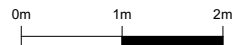
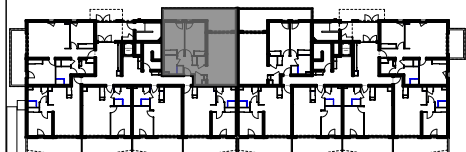
Chemin du Stiletto - AJACCIO

**Appartement: D2 - 01A**  
RDC

**T3**  
**Surfaces habitables**

ENTREE	3,92
SEJOUR / CUISINE	28,71
DGT	3,35
CHAMBRE 1	12,90
CHAMBRE 2	12,55
S. D'EAU	5,47
WC	1,58
BECT	1,39
	<b>69,88 m<sup>2</sup></b>

LOGGIA	21,01
	<b>21,01 m<sup>2</sup></b>



**PLAN DE VENTE**  
DATE : 02 / 06 / 2023