

# "LES TERRASSES DU STILETTO" - Bâtiment D2 Entrée A

Chemin du Stiletto - AJACCIO

**Appartement: D2 - 11A**

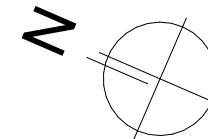
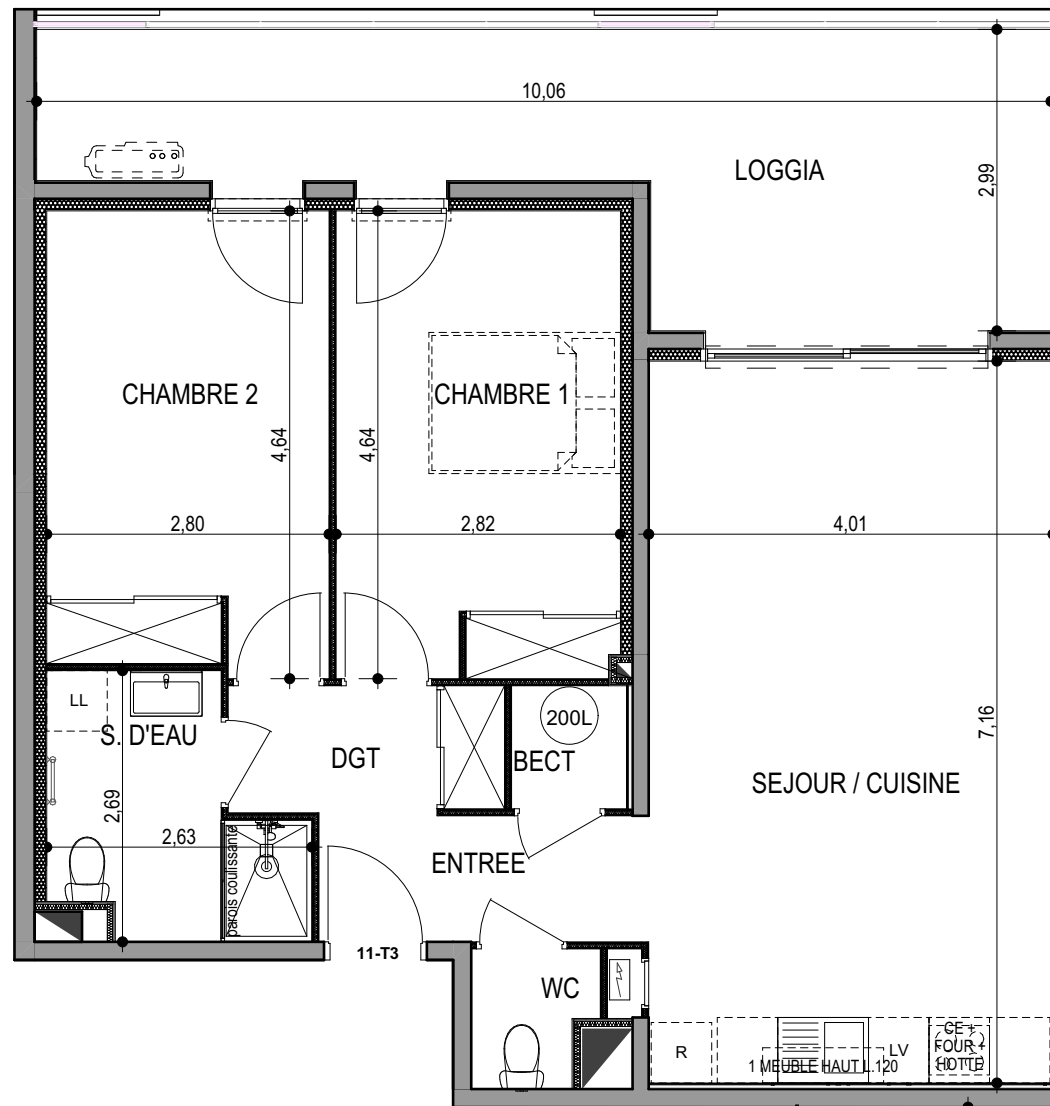
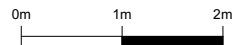
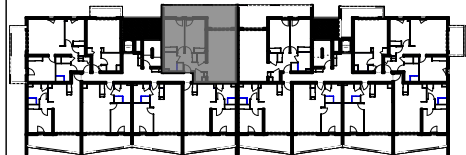
R+1

T3

**Surfaces habitables**

|                  |                            |
|------------------|----------------------------|
| ENTREE           | 3,92                       |
| SEJOUR / CUISINE | 28,71                      |
| DGT              | 3,35                       |
| CHAMBRE 1        | 12,90                      |
| CHAMBRE 2        | 12,55                      |
| S. D'EAU         | 5,47                       |
| WC               | 1,58                       |
| BECT             | 1,39                       |
|                  | <b>69,88 m<sup>2</sup></b> |

|        |                            |
|--------|----------------------------|
| LOGGIA | 21,01                      |
|        | <b>21,01 m<sup>2</sup></b> |



**PLAN DE VENTE**

DATE : 02 / 06 / 2023